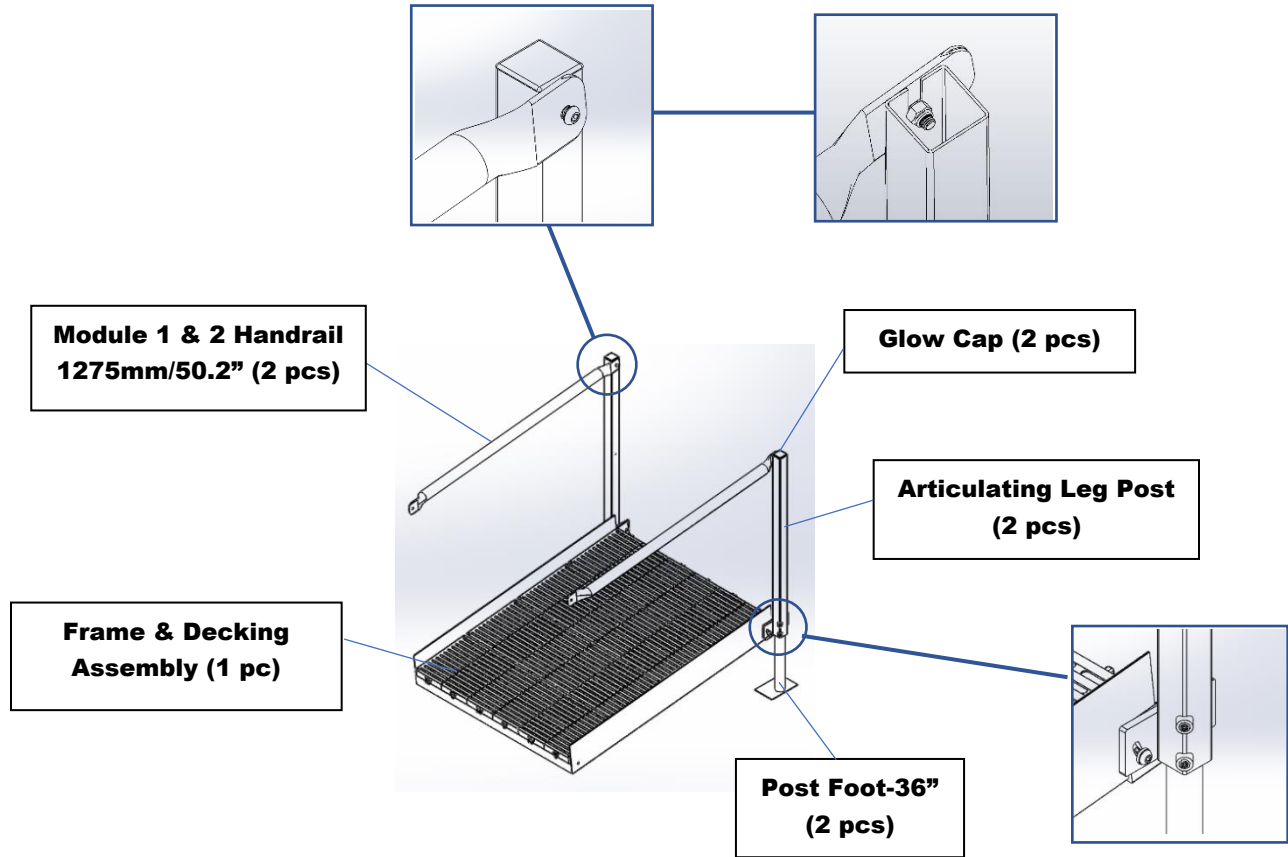




# Model 1000

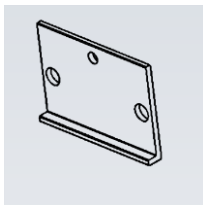
## Module 1- Sloping Section With Legs

### Assembly

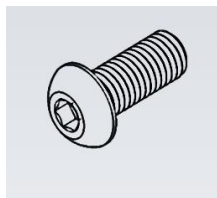


### Hardware

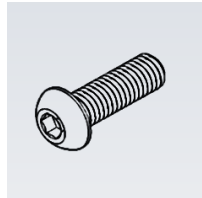
**Straight Plate (2 pcs)**



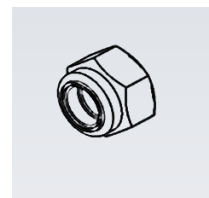
**M10 x 35 Bolt (4 pcs)**



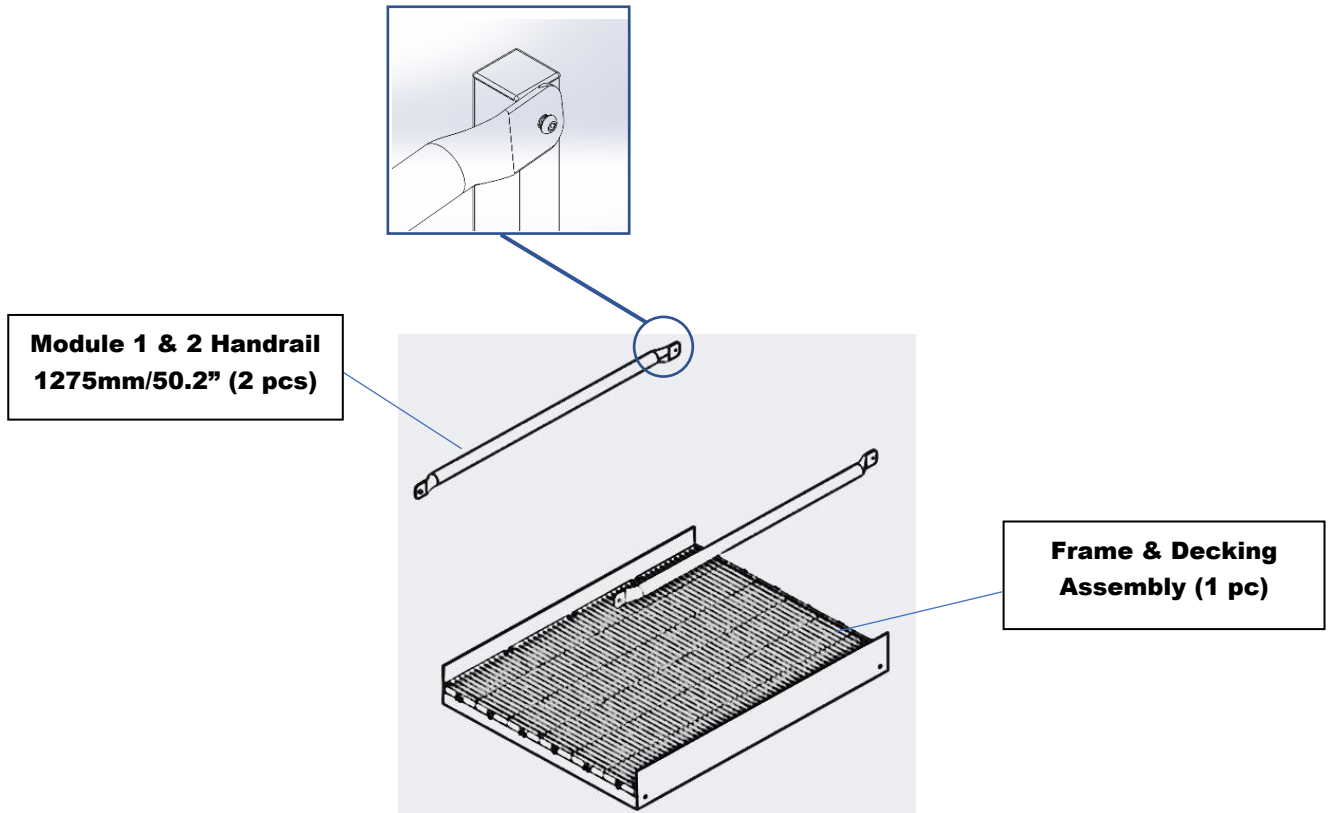
**M8 x 20 Bolt (2 pcs)**



**M8 Nut (2 pcs)**

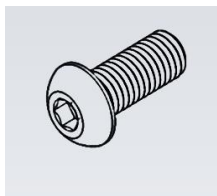


**Assembly**



**Hardware**

**M10 x 35  
Bolt (4 pcs)**

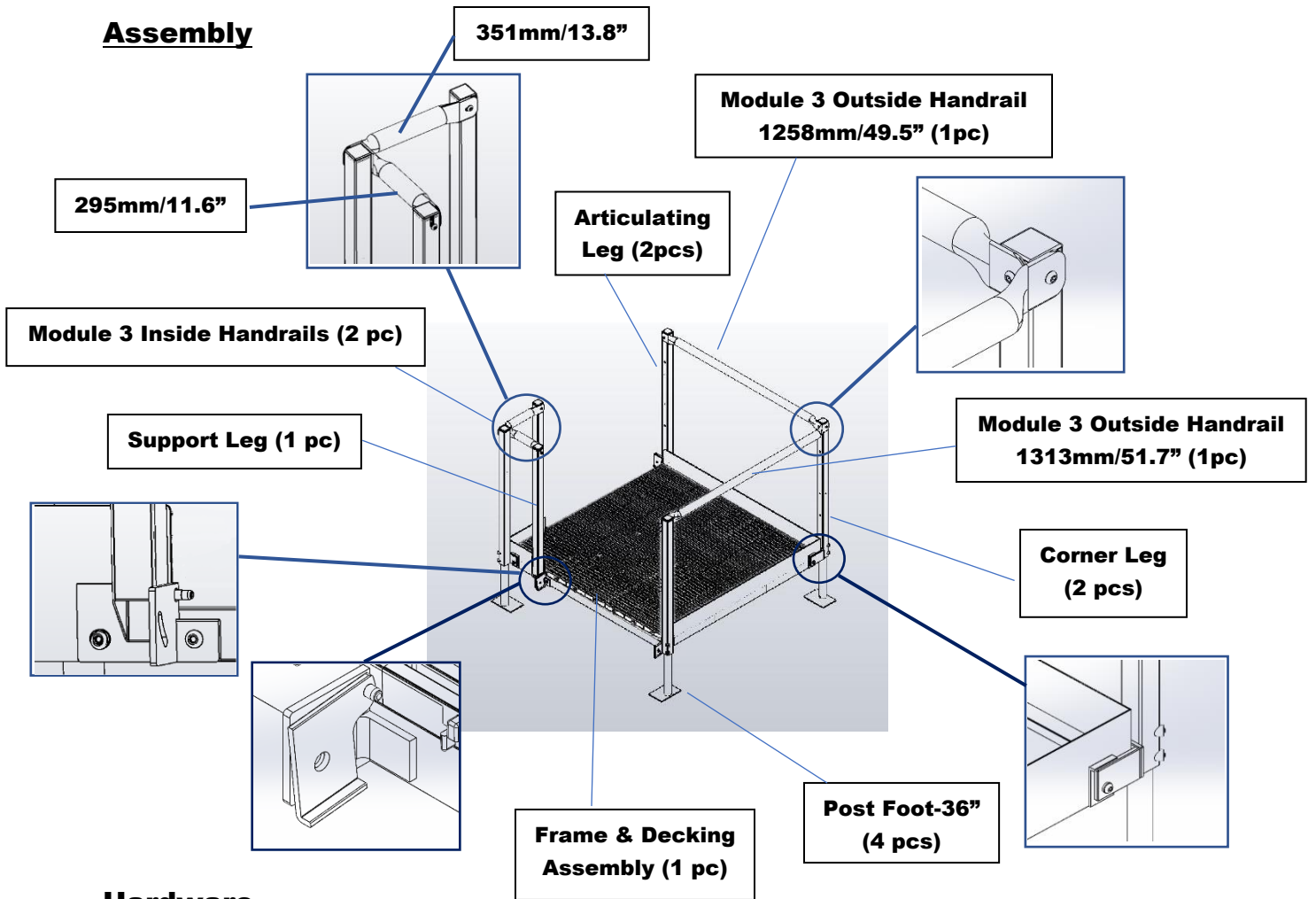




**Model 1000**

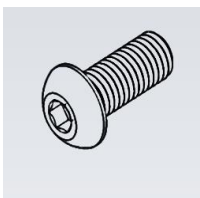
**Module 3 – 4' x 4' 90 Degree Turn Platform**

**Assembly**

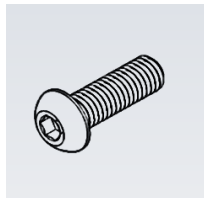


**Hardware**

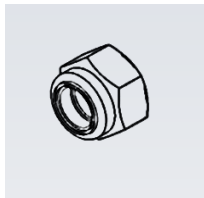
**M10 x 35  
Bolt (6 pcs)**



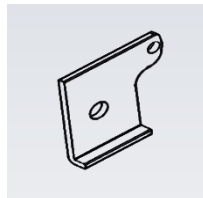
**M8 x 20 Bolt  
(8 pcs)**



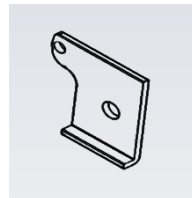
**M8 Nut  
(6 pcs)**



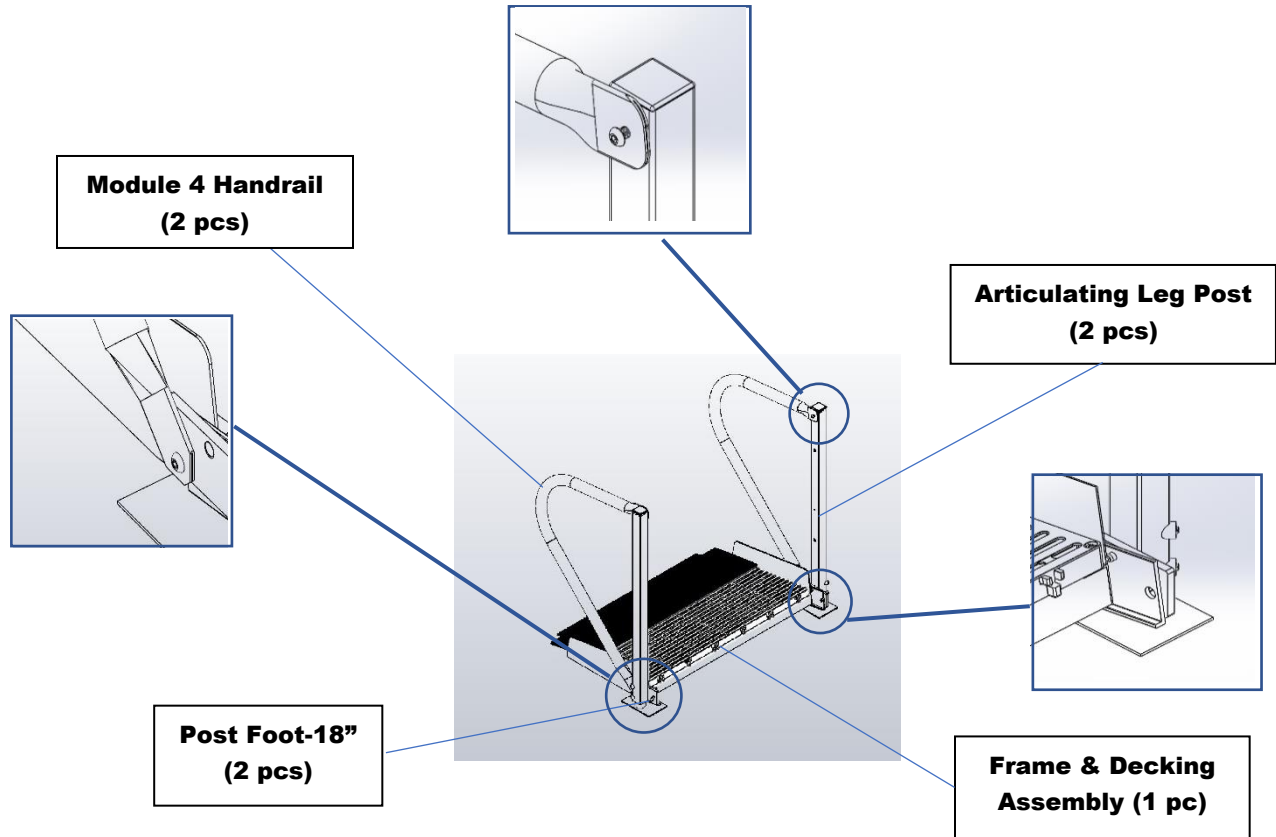
**Platform Plate  
Left (2 pc)**



**Platform Plate  
Right (2 pcs)**

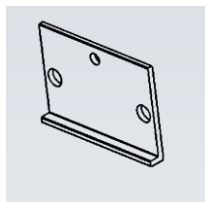


**Assembly**

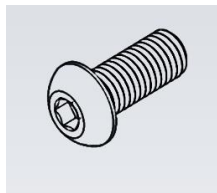


**Hardware**

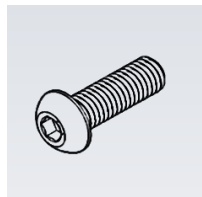
**Straight Plate (2 pcs)**



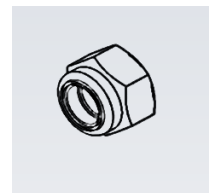
**M10 x 35 Bolt (2 pcs)**



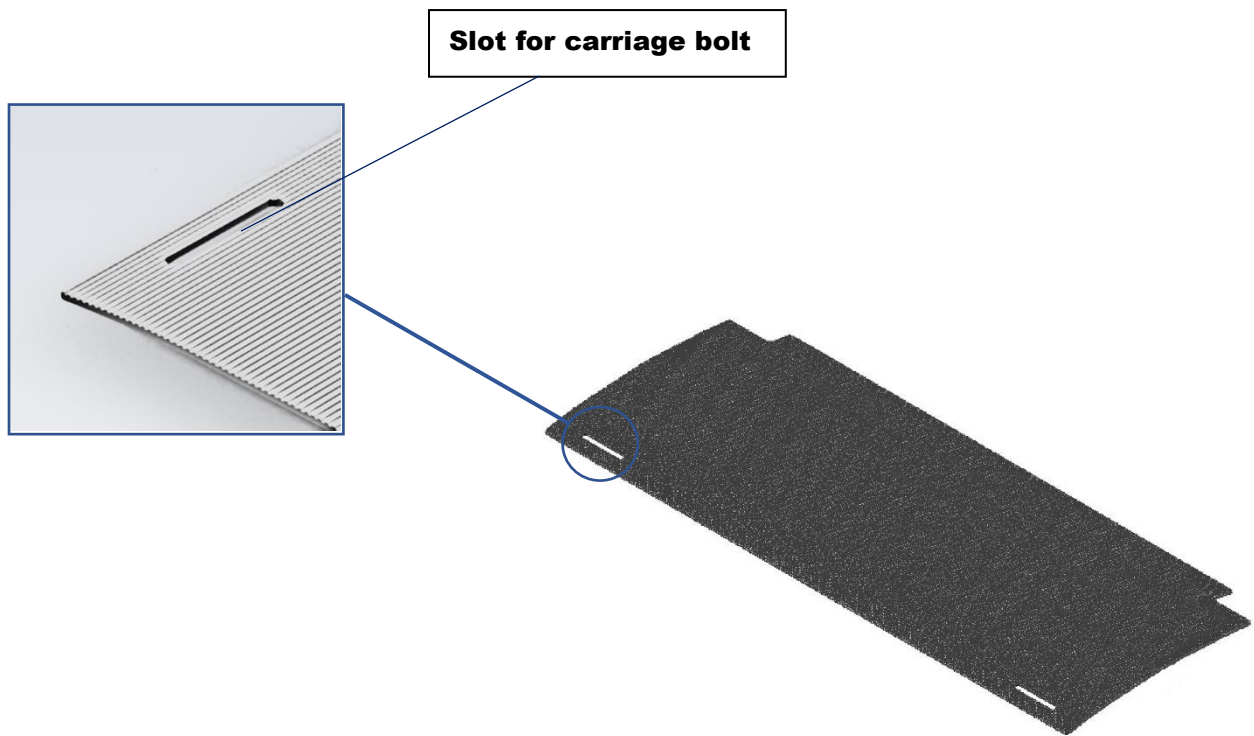
**M8 x 20 Bolt (4 pcs)**



**M8 Nut (4 pcs)**



**Assembly**



**Hardware**

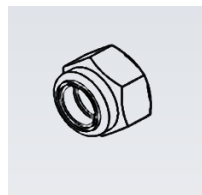
**M8 x 50 Carriage Bolt (2 pcs)**



**Fender Washer (2 pcs)**

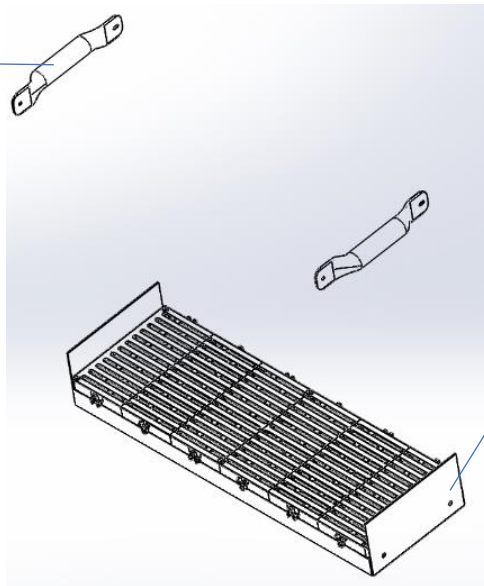
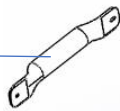


**M8 Nut (2 pcs)**



**Assembly**

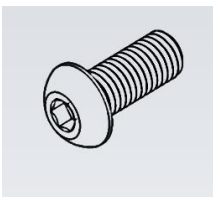
**Module 7 Handrail  
(2 pcs)**



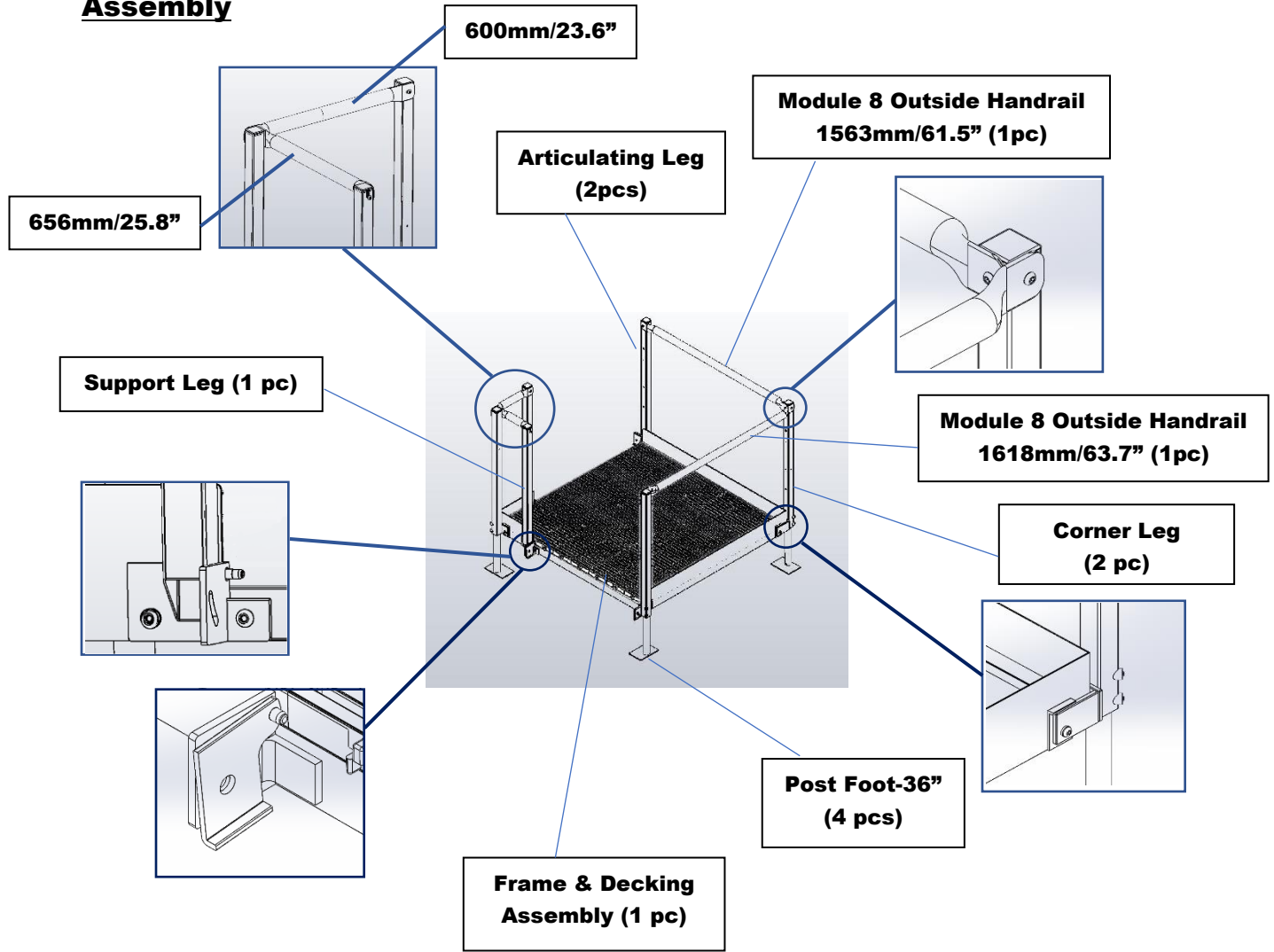
**Frame & Decking  
Assembly (1 pc)**

**Hardware**

**M10 x 35  
Bolt (4 pcs)**

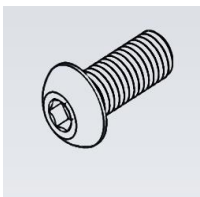


**Assembly**

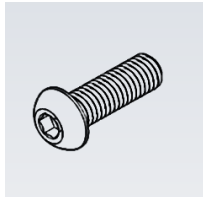


**Hardware**

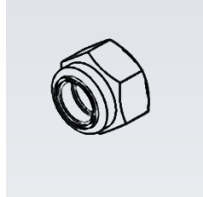
**M10 x 35 Bolt (8 pcs)**



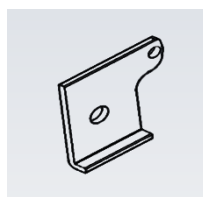
**M8 x 20 Bolt (8 pcs)**



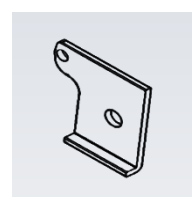
**M8 Nut (6 pcs)**



**Platform Plate Left (2 pcs)**



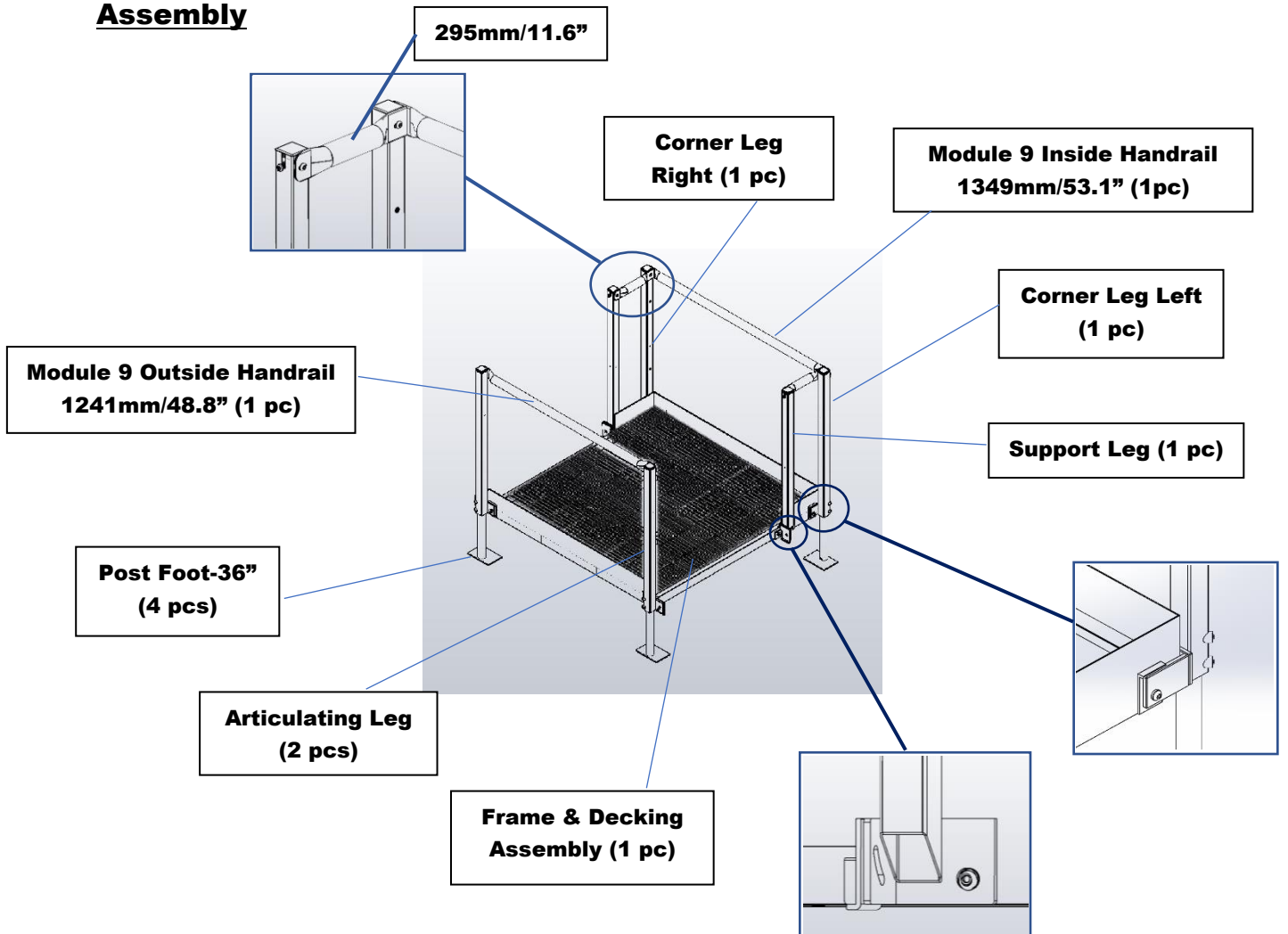
**Platform Plate Right (2 pcs)**





## Module 9 – 4' x 4' Straight Resting Platform

### Assembly



### Hardware

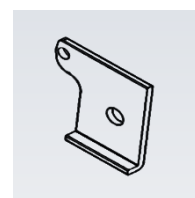
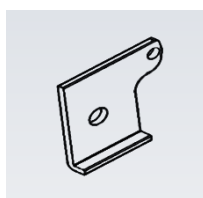
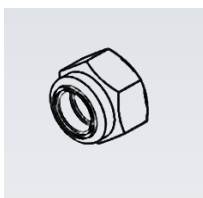
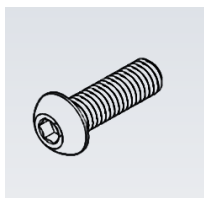
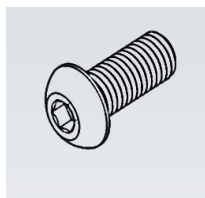
M10 x 35 Bolt (6 pcs)

M8 x 20 Bolt (6 pcs)

M8 Nut (6 pcs)

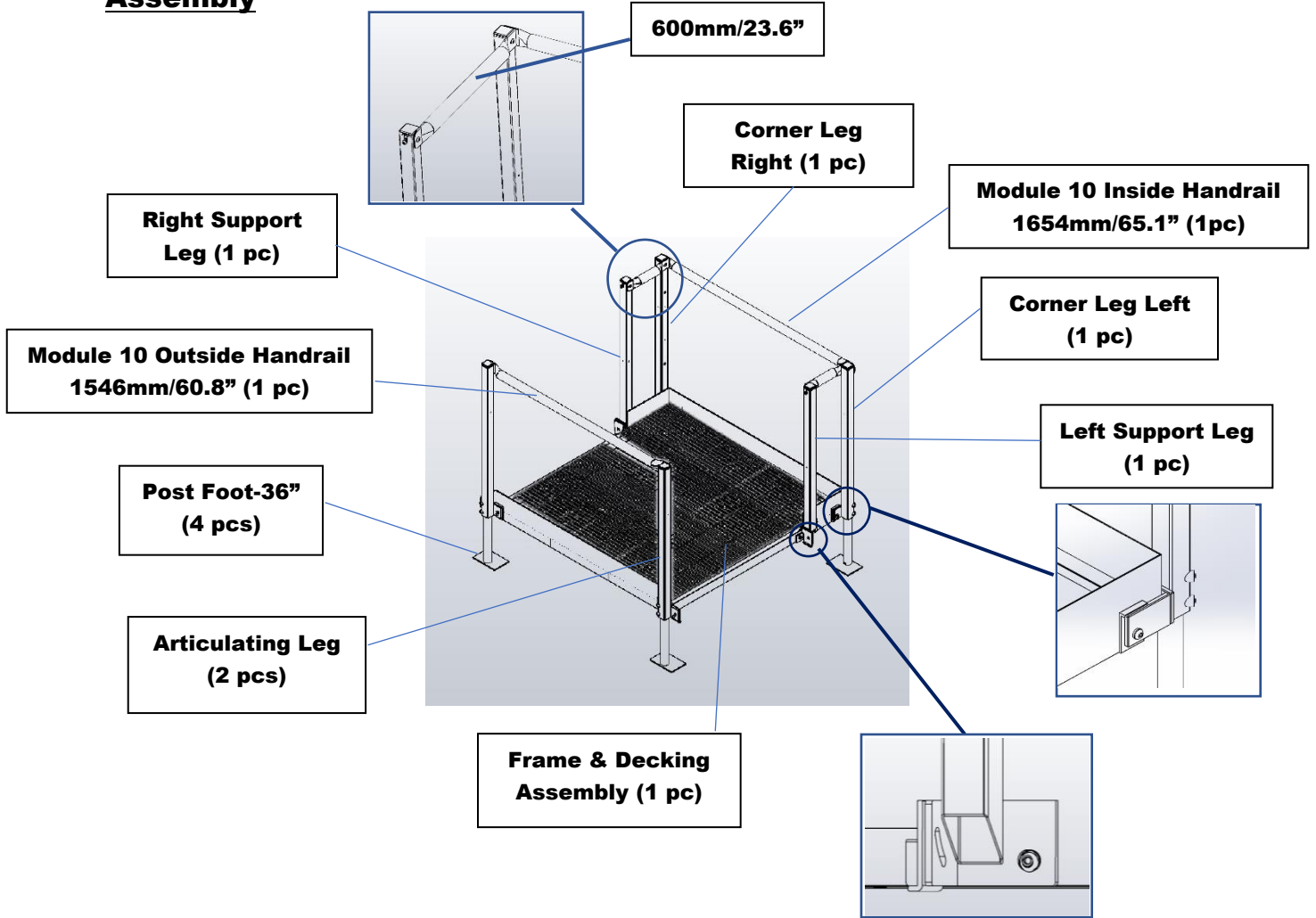
Platform Plate Left (2 pcs)

Platform Plate Right (2 pcs)



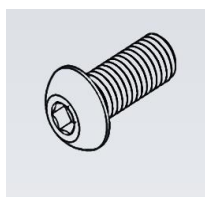


**Assembly**

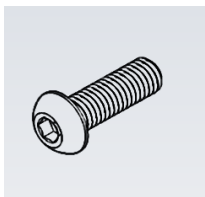


**Hardware**

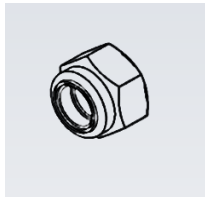
**M10 x 35 Bolt (6 pcs)**



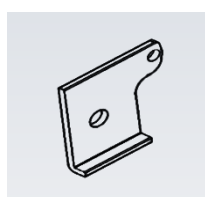
**M8 x 20 Bolt (8 pcs)**



**M8 Nut (8 pcs)**



**Platform Plate Left (2 pcs)**



**Platform Plate Right (2 pcs)**

